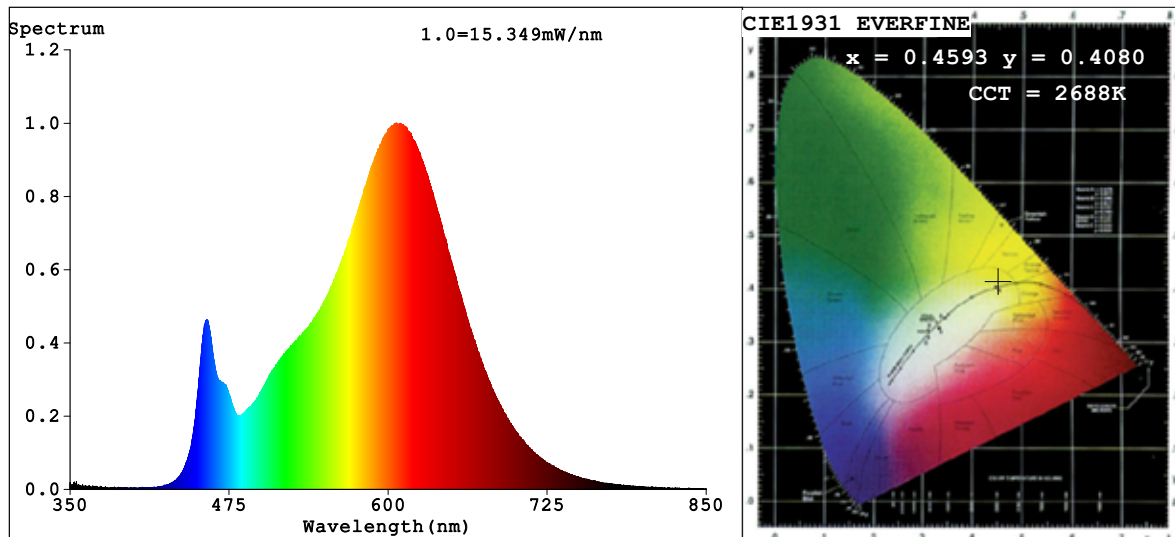


Spectrum Test Report



Color Parameters:

Chromaticity Coordinate: $x=0.4593$ $y=0.4080$ $u'=0.2633$ $v'=0.5263$
 CCT=2688K (Duv=-0.0009) Dominant WL: $\lambda_d = 584.6\text{nm}$ Purity=60.3%
 Ratio: R=25.6% G=71.8% B=2.6%; Peak WL: $\lambda_p = 606.8\text{nm}$ FWHM=111.9nm
 Render Index: Ra=83.1 CRI=78.9 TM30: Rf=82 Rg=94
 R1 =83 R2 =95 R3 =92 R4 =80 R5 =84 R6 =95 R7 =80
 R8 =57 R9 =12 R10=89 R11=80 R12=77 R13=86 R14=96 R15=75

Photo Parameters:

Flux = 686.1 lm Eff. : 128.09 lm/W Fe = 2.146 W

Electrical parameters:

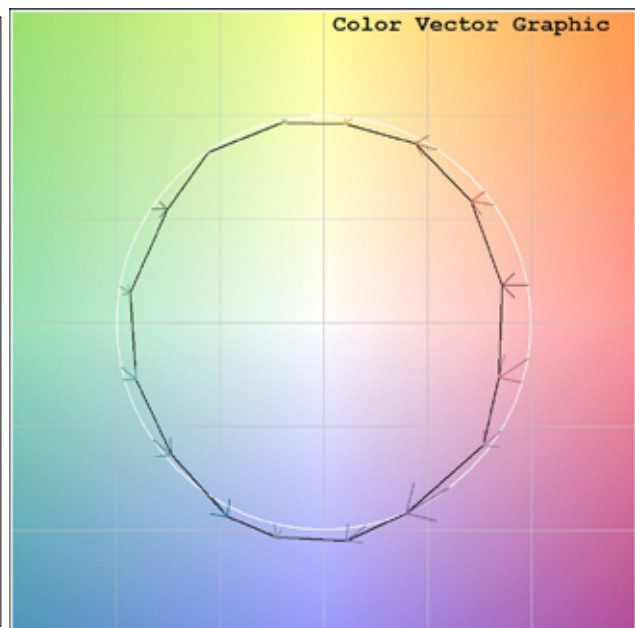
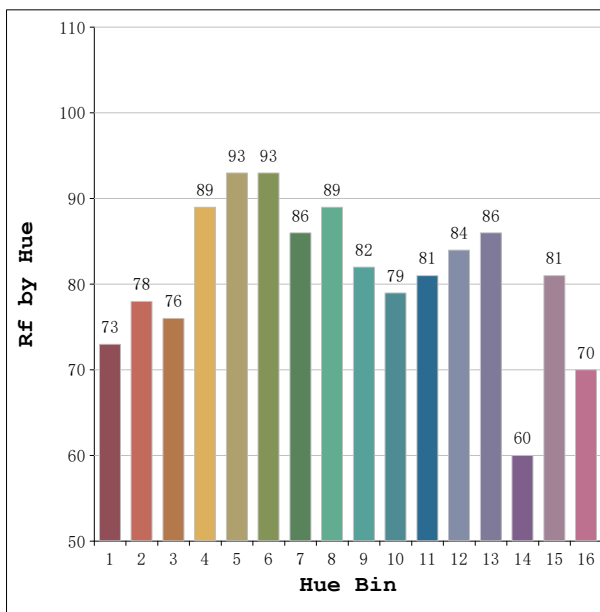
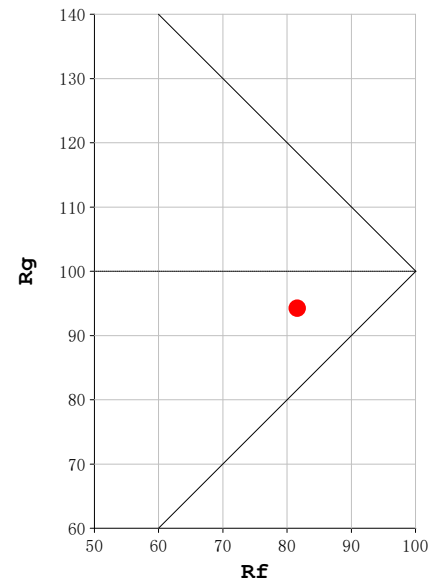
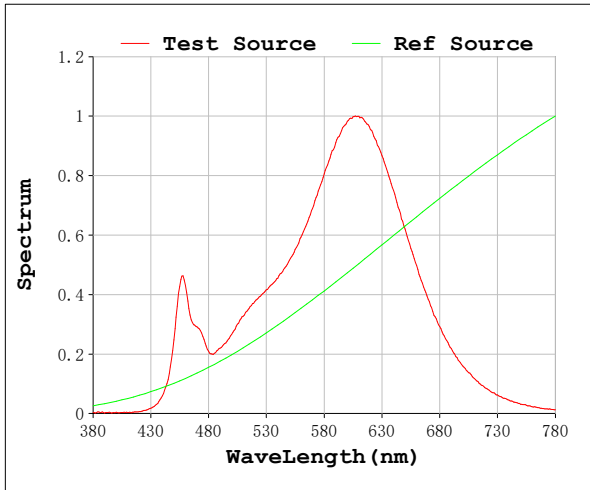
V = 23.998 V I = 0.2232 A P = 5.356 W PF = 1.000

Status: Integral T = 1349 ms Ip = 40596 (62%)

Model: Ecoled Élite 5 2700
 Tester: Sergio Carneros
 Temperature: 20Deg
 Manufacturer: Luz Negra

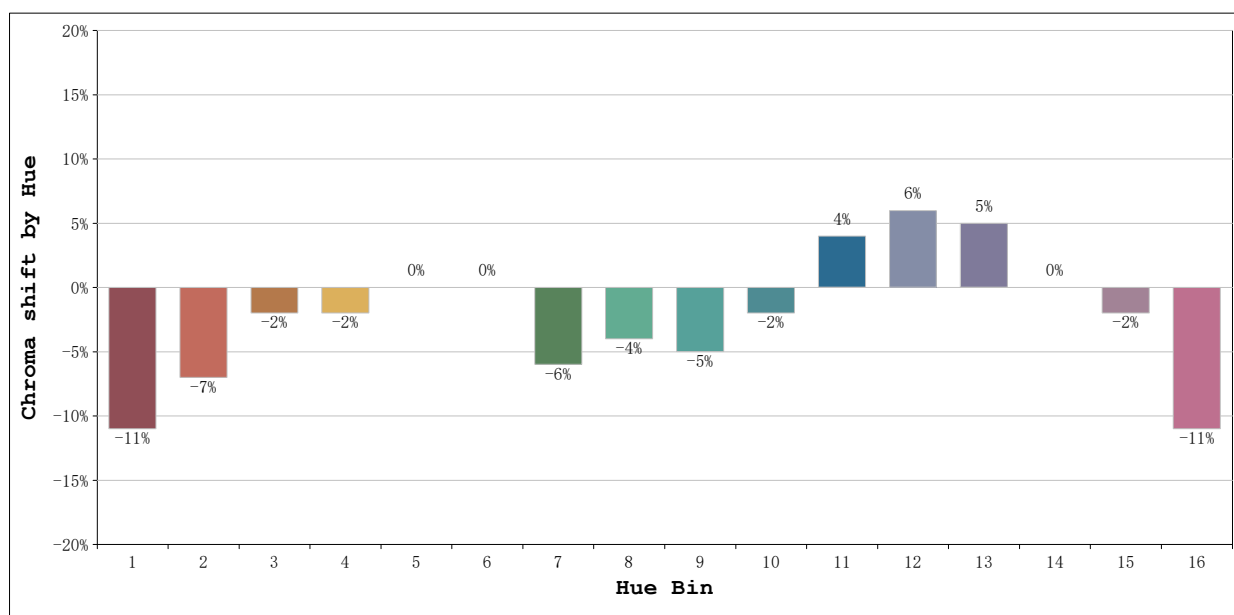
Number: 31.218
 Date: 2025-08-26 09:31:32
 Humidity: 50%
 Remarks: 100cm de tira flexible

Rf: 82 **CCT: 2688 K** **u': 0.2633**
Rg: 94 **Duv: -0.0009** **v': 0.5263**



Model:Ecoled Élite 5 2700
Tester:Sergio Carneros
Temperature:20Deg
Manufacturer:Luz Negra

Number: 31.218
Date:2025-08-26 09:31:32
Humidity:50%
Remarks:100cm de tira flexible



			Graphic shift(%)	
Hue Bin	Hue Angle	Rf	Chroma	Hue
1	0.0° - 22.5°	73	-11	2
2	22.5° - 45.0°	78	-7	8
3	45.0° - 67.5°	76	-2	10
4	67.5° - 90.0°	89	-2	3
5	90.0° - 112.5°	93	0	2
6	112.5° - 135.0°	93	0	0
7	135.0° - 157.5°	86	-6	-3
8	157.5° - 180.0°	89	-4	2
9	180.0° - 202.5°	82	-5	7
10	202.5° - 225.0°	79	-2	11
11	225.0° - 247.5°	81	4	11
12	247.5° - 270.0°	84	6	2
13	270.0° - 292.5°	86	5	-10
14	292.5° - 315.0°	60	0	-23
15	315.0° - 337.5°	81	-2	-10
16	337.5° - 360.0°	70	-11	-11

Model:Ecoled Élite 5 2700
Tester:Sergio Carneros
Temperature:20Deg
Manufacturer:Luz Negra

Number: 31.218
Date:2025-08-26 09:31:32
Humidity:50%
Remarks:100cm de tira flexible